



# Replace ELV Simulator

**CG-MB**

CGDI-MB OAS 4 20 83

Mileage repair GateWay Read/Write Wiring Diagram Firmware upgrade Bonus points query Update Log

**EIS**

Read/Write Key

Compute Password

Generate EE

Auto Computer

ELV

**EIS Basic Information**

SSID: BO 3C 27 D3 VIN: [redacted] Write Allow Modify

EIS number: 2045450908 Mileage: 0 KM The last key used: 1 The penultimate used: Unused

**EIS Key Basic Information**

	Used	Disabled
Key 1: 05 D3 37 DA 32 FD BC 72	<input checked="" type="checkbox"/>	<input type="checkbox"/>
Key 2: 65 46 F6 8B E1 CD BB 07	<input type="checkbox"/>	<input type="checkbox"/>
Key 3: BE 69 56 09 CB D5 AC 5C	<input type="checkbox"/>	<input type="checkbox"/>
Key 4: B0 16 3D AD C4 DB 21 B1	<input type="checkbox"/>	<input type="checkbox"/>
Key 5: 8F 54 FF 31 37 F5 1E 4C	<input type="checkbox"/>	<input type="checkbox"/>
Key 6: 44 CD 93 EC 66 43 F8 08	<input type="checkbox"/>	<input type="checkbox"/>
Key 7: F2 00 47 E2 E2 55 AA 4D	<input type="checkbox"/>	<input type="checkbox"/>
Key 8: 8C 5A 7C 8F 4F 43 23 B0	<input type="checkbox"/>	<input type="checkbox"/>

Key password: [redacted] Copy Paste

Special key: 22 2C AD 28 0C 2A 33 49

Erase password: [redacted] Get

Enable Password: [redacted] Get

Initialized  Personalized  
 TP cleared  Activated  
 Dealer EIS  FBS4

Read EIS Data

Save EIS Data

Load EIS Data

Write EIS Data

Wipe the EIS

Clear TP Protection

Activate EIS

Disable Enable

Sync W204 ELV

Read success!

**OBD connects Auto, Read EIS data**

CGDI-MB OAS 4 20 83

Mileage repair GateWay Read/Write Wiring Diagram Firmware upgrade Bonus points query Update Log

EIS

Read/Write Key

**Compute Password**

Generate EE

Auto Computer

ELV

### Collect Data and Upload the File

EIS Type:

1.Insert the original car key into the EIS  
2.Insert key into the CGMB device and wait for the collection  
3.Insert the car key into the EIS 10s and dial out  
4.Insert the key into the EIS  
5.Unplug the key for 5 seconds and then insert the key into EIS  
6.Insert the key into the CGMB device  
7.Save the generated files

### Query the Server and Wait For the Results

Key password

**Operation Tip:**

1. Please choose the way to collect the key first, and then click the 'Collect Data' button  
2. After the collection is completed, click the 'Upload Data' button to upload the collected data  
3. Click the 'Query Result' button and check the 'Auto Refresh' option, the program will start the automatic query.

Copy key with key  
 Copy key without key

Auto Refresh

Welcome to use!

Turn to“compute password”, collect data

CGDI-MB OAS 4 20 83

Mileage repair GateWay Read/Write Wiring Diagram Firmware upgrade Bonus points query Update Log

**EIS**

**Read/Write Key**

**Compute Password**

**Generate EE**

**Auto Computer**

**ELV**

### Collect Data and Upload the File

EIS Type:

- 1.Insert the original car key into the EIS
- 2.Insert key into the CGMB device and wait for the collection
- 3.Insert the car key into the EIS 10s and dial out
- 4.Insert the key into the EIS
- 5.Unplug the key for 5 seconds and then insert the key into EIS
- 6.Insert the key into the CGMB device
- 7.Save the generated files

### Query the Server and Wait For the Results

Key password `D2 74 07 FB D8 3C 3A BF`

```
The vehicle voltage is 12.01V
This key is BE key!
```

Copy key with key  
 Copy key without key

Auto Refresh

Collection closed!

The collection process will not be described one by one, upload data, successfully query the password and copy the key password

CGDI-MB OAS 4 20 83

Mileage repair GateWay Read/Write Wiring Diagram Firmware upgrade Bonus points query Update Log

**EIS**

Read/Write Key

Compute Password

Generate EE

Auto Computer

ELV

### EIS Basic Information

SSID: E0 3C 27 D3  VIN:    Allow Modify

EIS number: 2045450908  Mileage: 0 KM  The last key used: 1  The penultimate used: Unused

### EIS Key Basic Information

	Used	Disabled
Key 1: 05 D3 37 DA 32 FD BC 72	<input checked="" type="checkbox"/>	<input type="checkbox"/>
Key 2: 65 46 F6 8B E1 C0 BB 07	<input type="checkbox"/>	<input type="checkbox"/>
Key 3: BE 89 56 09 CB D5 AC 5C	<input type="checkbox"/>	<input type="checkbox"/>
Key 4: B0 16 3D AD C4 DB 21 B1	<input type="checkbox"/>	<input type="checkbox"/>
Key 5: 8F 54 FF 31 37 F5 1E 4C	<input type="checkbox"/>	<input type="checkbox"/>
Key 6: 44 CD 93 EC 66 43 F8 08	<input type="checkbox"/>	<input type="checkbox"/>
Key 7: F2 00 47 E2 E2 55 AA 4D	<input type="checkbox"/>	<input type="checkbox"/>
Key 8: 8C 5A 7C 8F 4F 43 23 B0	<input type="checkbox"/>	<input type="checkbox"/>

Key password:

Special key:

Erase password:

Enable Password:

Initialized  Personalized  
 TP cleared  Activated  
 Dealer EIS  FBS4

Welcome to use!

Turn to the EIS interface and paste the key password

CGDI-MB OAS 4 20 83

Mileage repair GateWay Read/Write Wiring Diagram Firmware upgrade Bonus points query Update Log

**EIS**

**EIS Basic Information**

SSID: EO 3C 27 D3 VIN: [ ] Write Allow Modify

EIS number: 2045450908 Mileage: 0 KM The last key used: 1 The penultimate used: Unused

**EIS Key Basic Information**

Key	Hex	Copy	Paste
Key 1	05 D3 37 DA 32 F1 BC	8 3	3A BF
Key 2	65 46 F6 8B E1 C0 BB		
Key 3	BE 89 56 09 CB B5 AC		
Key 4	B0 16 3D AD C4 D1 21		
Key 5	8F 54 FF 31 37 F5		
Key 6	44 CD 93 EC 66 43 F8 06		
Key 7	F2 00 47 E2 E2 55 AA 4D		
Key 8	8C 5A 7C 8F 4F 43 23 B0		

Get Get

Initialize Personalized TP cleared Activated Dealer EIS FBS4

Read EIS Data Save EIS Data Load EIS Data Write EIS Data Wipe the EIS Clear TP Protection Activate EIS Disable Enable Sync W204 ELV

**Benz Monster**  
Save file successfully!  
确定

Save file successfully!

Save data, Default file name



**Put on the simulator and clip the K-line**

CGDI-MB OAS 4 20 83

Mileage repair GateWay Read/Write Wiring Diagram Firmware upgrade Bonus points query Update Log

EIS

Read/Write Key

Compute Password

Generate EE

Auto Computer

**ELV**

### ELV Basic Information

ELV Number: [input] VIN: [input]

ELV SerialNumber: [input] Hardware Version: [input] Software Version: [input]

### ELV KEY Information

Key 1 [input]  Disabled

Key 2 [input]  Disabled

Key 3 [input]  Disabled

Key 4 [input]  Disabled

Key 5 [input]  Disabled

Key 6 [input]  Disabled

Key 7 [input]  Disabled

Key 8 [input]  Disabled

SSID: [input]

Key password: [input]

Special key: [input]

Erase password: [input]

Initialized  Personalized

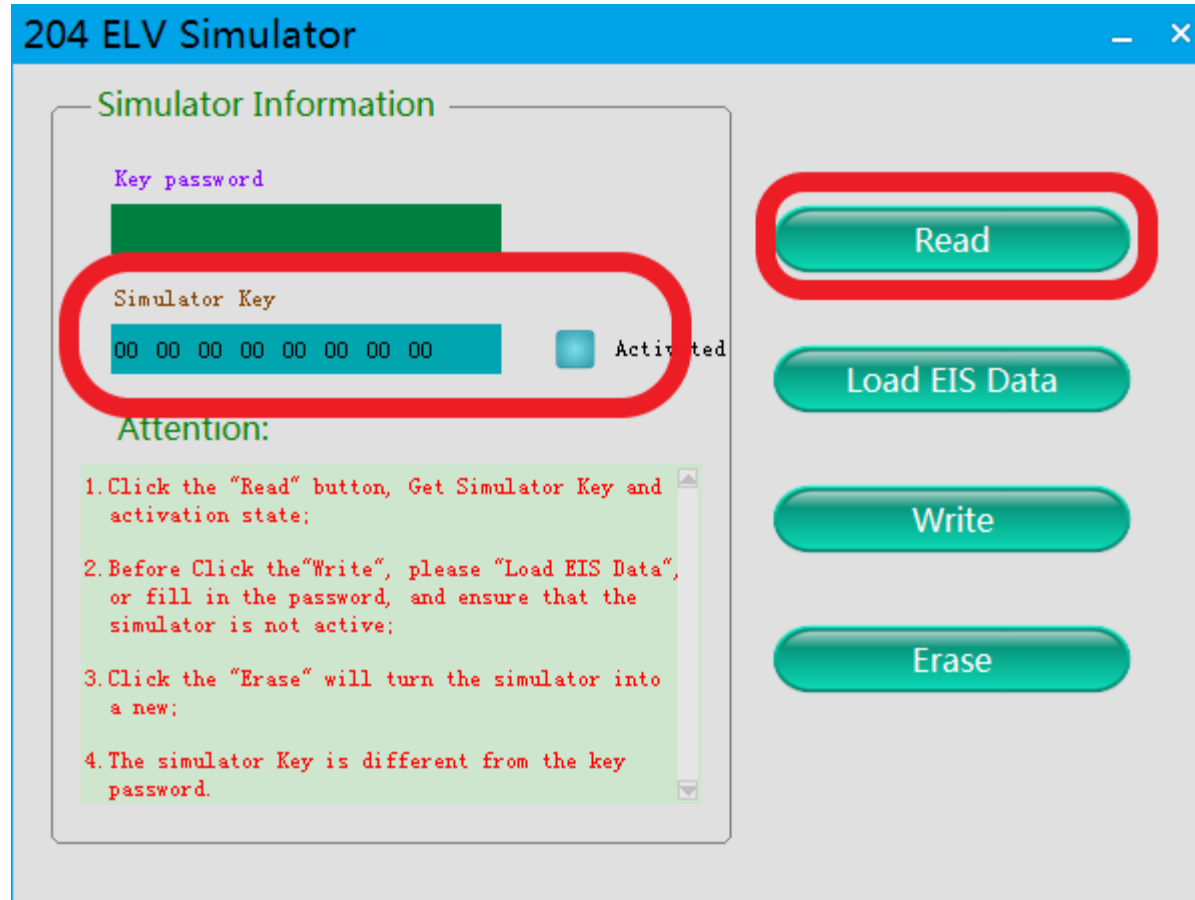
TP cleared  Activated

W204, W207, W212

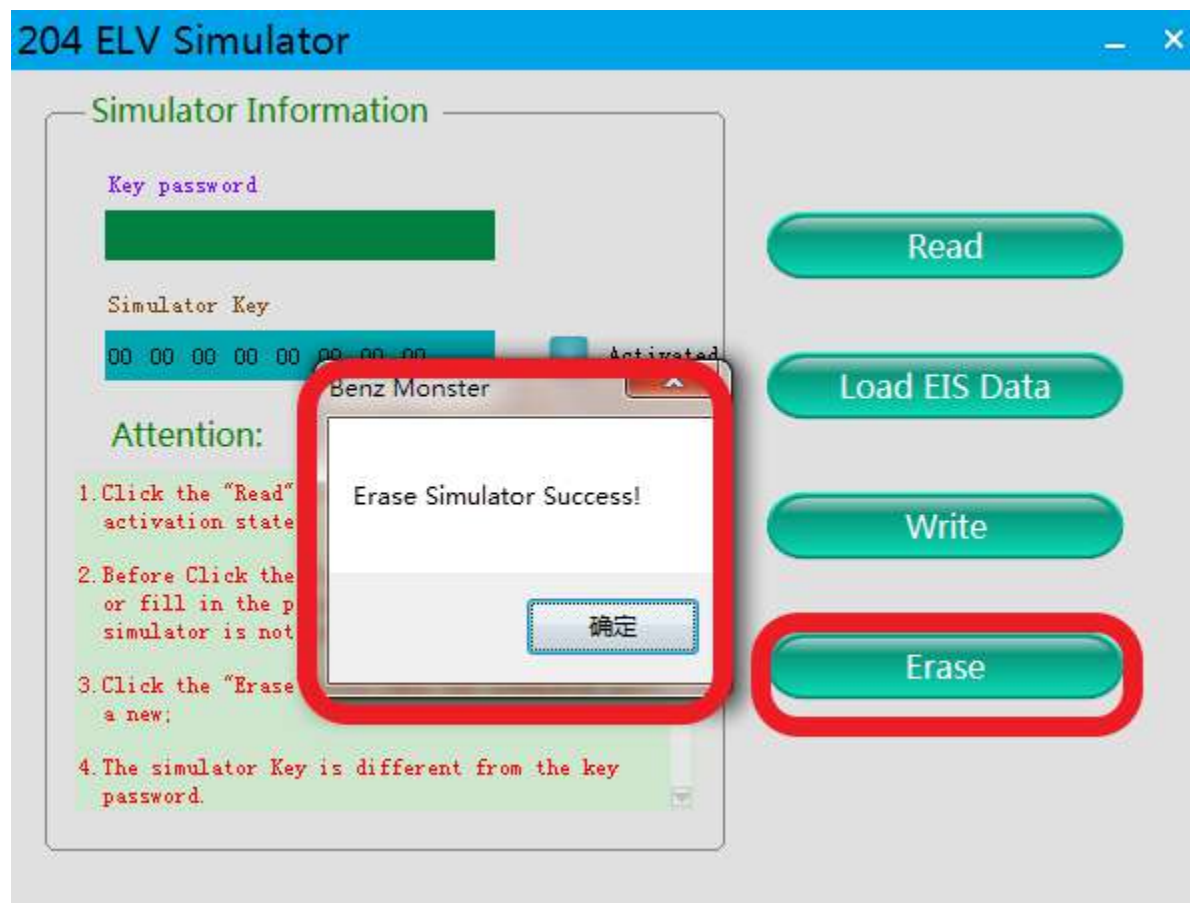
Welcome to use!

Click“ELV”, enter“ simulator”

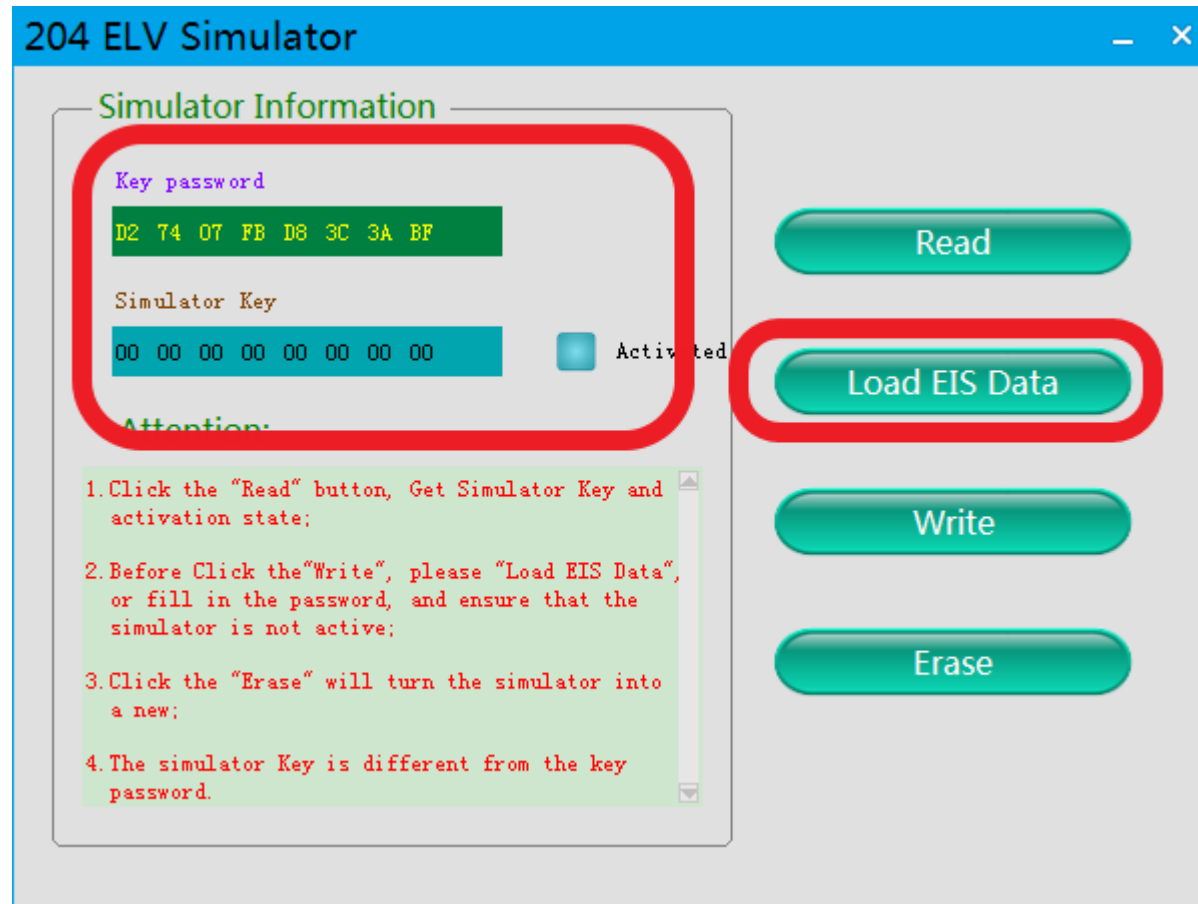




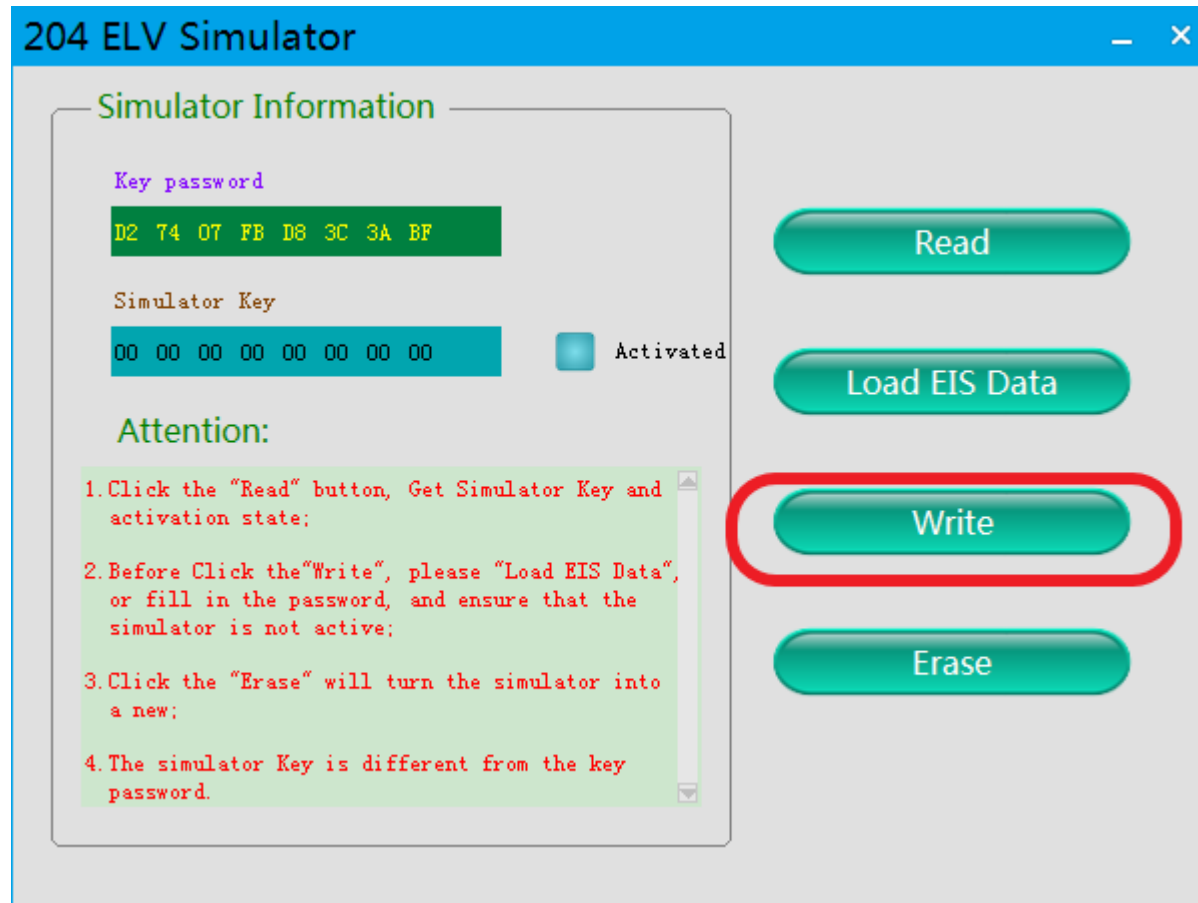
**Read Simulator, display related information**



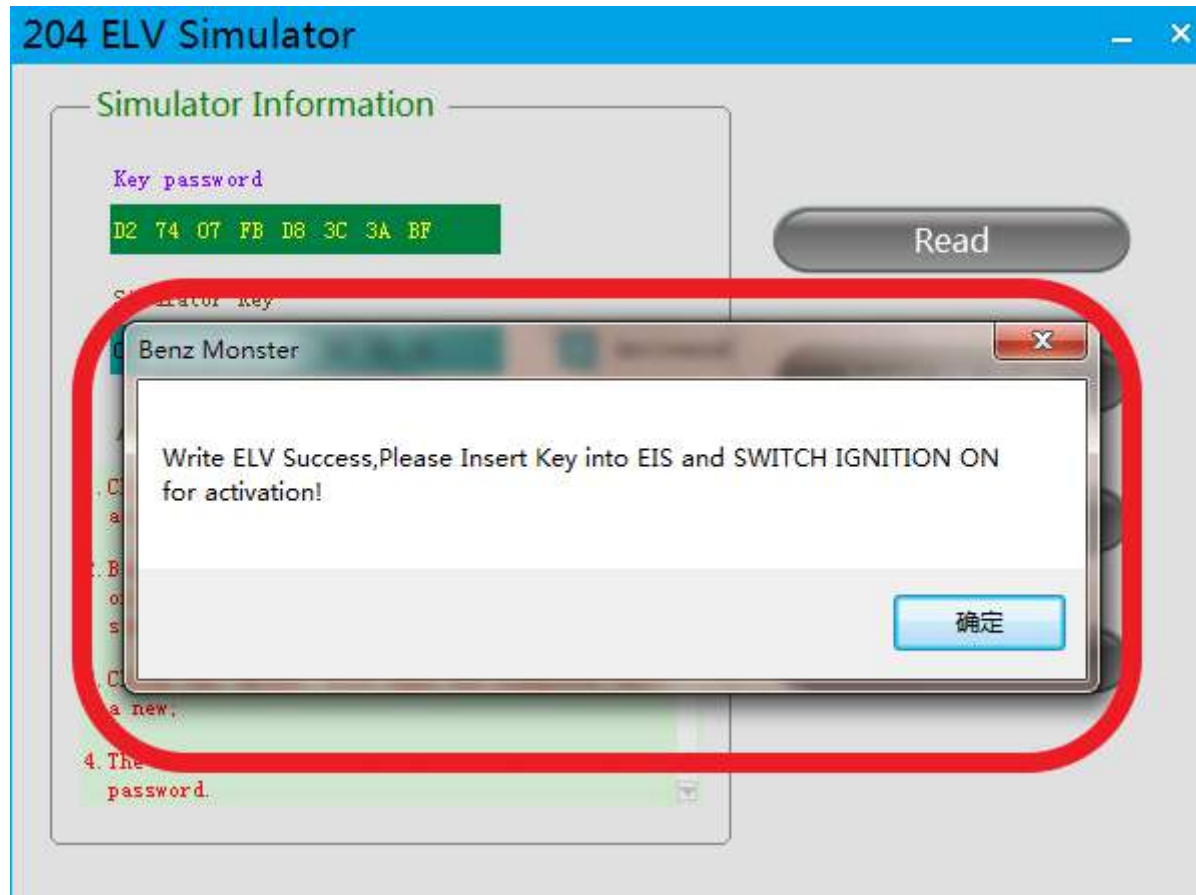
erase simulator



Load the EIS data just saved and check whether the key password is correct



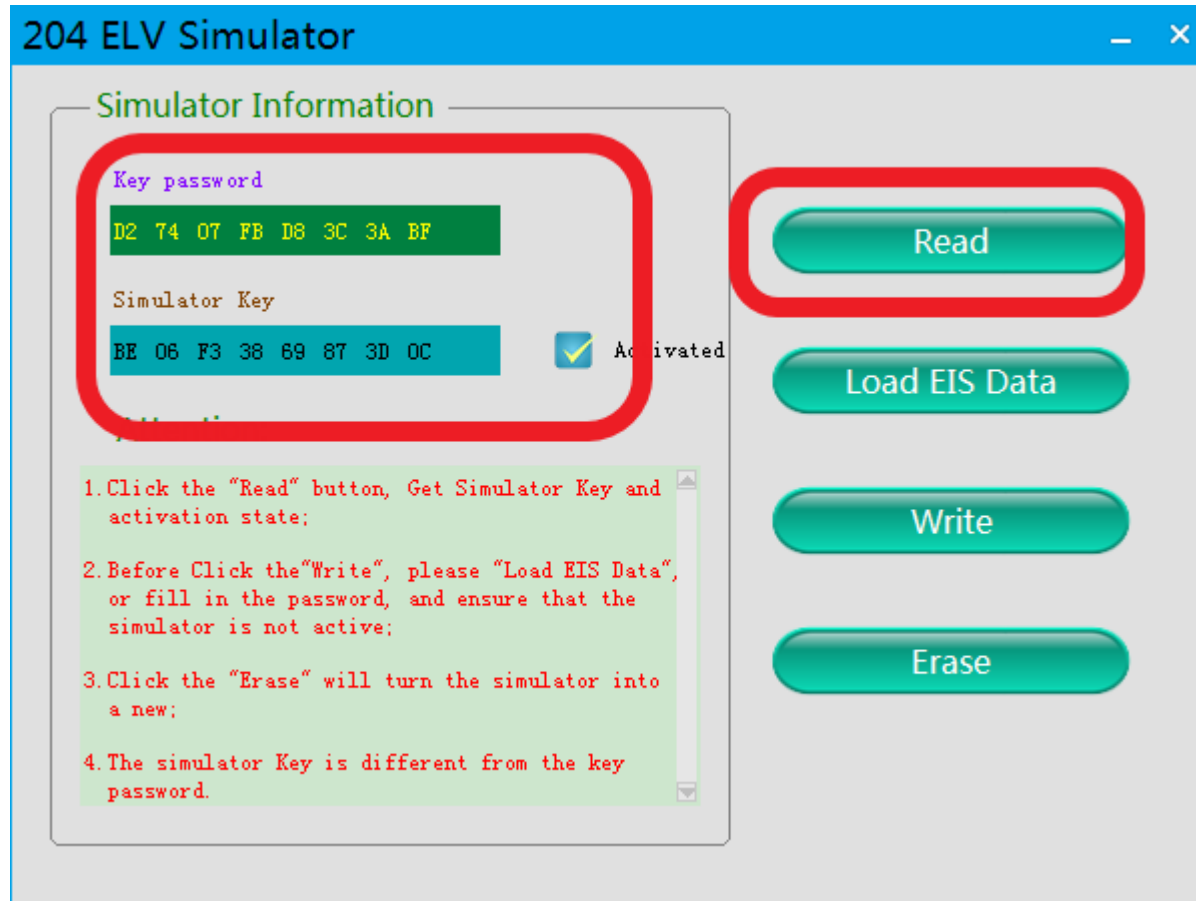
**Click 'write' button**



**Write ELV success, please insert key into EIS and switch ignition on for activation**



**Actual operation**



**Read simulator again, show activated, match successfully !**